

pigPRO™

PIG PASSAGE INDICATOR

pigPRO™

Series 57

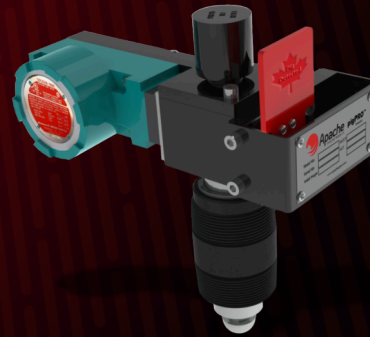
Our most popular pigPRO™

The Base Model 57 is a visual flag indicator with manual reset. It includes a thread mounting nipple, standard lower housing with fluorocarbon O-rings, and a hemispherical plunger with a flag assembly.



pigPRO™

Series 53



- Combined visual/electrical indicator with manual/automatic reset
- Thread mounting nipple
- Standard lower housing with O-rings
- Hemispherical plunger with a flag assembly
- Weather sealed & explosion proof limit switch

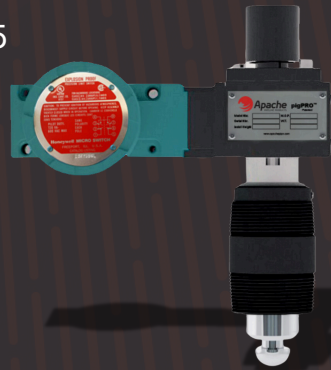
The switch employed on this model is NEMA rated, UL listed and CSA certified to suit most applications.

Available options:

- Flange Mount
- Extension Pole
- Isolation Ball Valve (Series 67)

pigPRO™

Series 55



- Electrical indicator with automatic reset
- Thread mounting nipple
- Standard lower housing with O-rings
- Hemispherical plunger with a flag assembly
- Weather sealed & explosion proof limit switch

The switch employed on this model is NEMA rated, UL listed and CSA certified to suit most applications.

Apache has developed and engineered the patented pigPRO™ pig passage indicator, manufactured at our facility in Edmonton, Alberta, Canada. The patented pigPRO™ indicator accurately detects the passage of a cleaner traveling within the pipeline system. It is an intrusive model with bi-directional activation, hemispherical plunger sensitivity adjustment and hemispherical plunger penetration adjustment as standard features. The intruding plunger is actuated by the passage of a pipeline cleaner and triggers a visual and/or electrical indicator. The unique patented design does not allow paraffin or other pipeline media to obstruct the operational mechanisms and thus ensures positive indication of the pig's passage. Our ability to retrofit to any existing mount makes the Apache pigPRO™ completely versatile in design.

PLEASE CONTACT APACHE FOR MORE DETAILED INFORMATION.

1575 - 90 Ave Edmonton, AB Canada T6P 0E2

Ph: 780.416.4850 | Fax: 780.416.4829 | apachepipe.com | Email: sales@apachepipe.com

world class world wide



PHO-PP-04/16